

# IND930/970 Industrial Terminal



## IND930/IND970 Terminal

Increase Process Control

Connectivity & Visibility

User Friendly Interface

Optimal Process Protection



**Process Control, Connectivity and Protection**  
Tailored to Your Workplace

**METTLER TOLEDO**



How Could Your Operation Benefit from the IND930/IND970?

Increase Process Control

Optimal Process Protection

User Friendly Interface

100% Connectivity & Visibility

## Process Control, Connectivity and Protection Tailored to Your Workplace

**IND930/IND970 Industrial Weighing Terminals allow you to prepare for the future of your production processes. The ability to customize your user experience sets your operators up for success and provides flexibility for your future needs. The high resolution touchscreen display provides ease of use in difficult environments and offers an intuitive menu structure.**

### Choose the IND930/IND970 to:

- Increase process control and productivity by selecting the right application or application bundle for your operation or customizing your own for a tailored fit
- Reduce and resolve human errors with a user-friendly interface
- Maximize the protection for your weighing process with advanced security options
- Increase connectivity and visibility for informed steering of the production process

► [www.mt.com/IND930](http://www.mt.com/IND930)

► [www.mt.com/IND970](http://www.mt.com/IND970)

Immediately achieve production consistency with our all-in-one pre-programmed application bundle ProWorks V1.0 for counting, checkweighing, manual fill, and totalization, or select the interface for more complex weighing processes like statistical quality control and formulation. INDpro also enables creation of custom applications if you want to tailor your process management.

Modernize your production process, without sacrificing safety. Bring your operation to the newest safety standard with IT security made specifically for industrial environments, including desktop protection, full update control and mass storage blocking.

Enable your workforce with intuitive workstations. Graphical interfaces and INDpro guide operators to allow for error-free production. Effectively operate up to 4 scales and multiple peripherals for increased productivity.

Seamless data integration enables advanced traceability and allows for more transparency in your processes. Gain a competitive edge with the ability to analyze the full picture and make improvements to your weighing processes.

Achieve next-level performance with POWERCELL® connectivity. Connect up to 2 PowerDeck™ platforms or 8 POWERCELL load cells for enhanced reliability, accuracy, and process visibility.

### Learn more at:

► [mt.com/IND-POWERCELL](http://mt.com/IND-POWERCELL)



IND930 with colorWeight bar graph

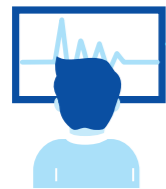


IND970 weighing screen and IND970 Elo-Box

# Build Your Ideal Solution

## Flexibility to Meet Your Needs

IND930/IND970 Industrial Weighing Terminals provide the power to speed-up processes, ensure production consistency, and enhance operational transparency with real time production data while delivering state of the art IT protection. The system design allows free programming with INDpro or run a wide range of weighing applications like FreeWeigh.Net, FormWeigh.Net or ProWorks V1.0 to fit the device 100% into your workplace.



### User Friendly Interface

Large viewing, wide viewing angle, long-life LED displays available in 10", 15" and 19" with intuitive graphical interfaces guide the user and allow error-free operation.



### IT Protection

State-of-the-art security options prevent the installation of malware and restrict critical parts of the system from unwanted modification.



### Ready to connect

Seamless integration options into PLC, MES, ERP and web-based systems enable operational transparency for informed decision making.



## Select Your Solution:



### Powerful Statistical Quality Control

Freeweigh.Net and IND930 SQC statistical quality and process control solutions allow you to control and fine-tune the production process monitoring critical process parameters constantly.

► [www.mt.com/SQC](http://www.mt.com/SQC)

Quality



### Smart Formulation

Complete control over recipe management and material dispensing process prevents operator errors and material waste, resulting in greater profitability and predictable manufacturing results. Form+ and FormWeigh.Net solutions simplify your complex and demanding formulation needs.

► [www.mt.com/Formplus](http://www.mt.com/Formplus)

Formulation



### Complete Process Monitoring

Collect+ data collection and visualization software can bring a new perspective to your processes by graphically representing process trends and enabling you to make informed business decisions.

► [www.mt.com/Collectplus](http://www.mt.com/Collectplus)

Visibility



### All-in One Basic Weighing Bundle: ProWorks V1.0

The all-in-one application bundle for counting, check-weighing, simple fill, and totalization processes allows you to immediately speed up your operation and reduce errors without the time and expense of programming and operator training.

► [www.mt.com/IND930](http://www.mt.com/IND930)

► [www.mt.com/IND970](http://www.mt.com/IND970)

Basic Weighing

### Build Your Own Solution

If your operation would benefit from a more tailored application, our INDpro-based software allows you to customize programs to manage your process and boost your productivity.

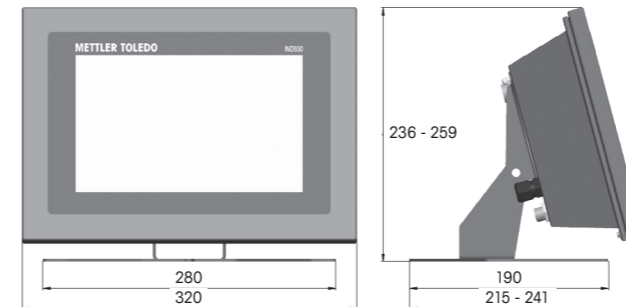
# Technical Specifications

## IND930/IND970

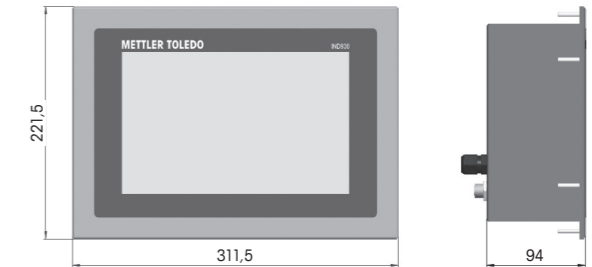
Description	IND930 compact	IND970 Human machine interface	IND970 Elo-Box
<b>Supported Applications and Features</b>	FreeWeigh, FormWeigh, Classic Base pac, COM pac, INDpro (Tool for custom application programming) ProWorks V1.0 (Counting, checkweighing, totalization, and manual fill)	-	FreeWeigh, FormWeigh, Classic Base pac, COM pac, INDpro (Tool for custom application programming) ProWorks V1.0 (Counting, checkweighing, totalization, and manual fill)
<b>Enclosure</b>	Desk: 259x320x241mm Panel: 221x311x94mm	Desk 15/19": 353x490x301mm Panel 15": 320x480x51mm Panel 19": 320x480x68mm	254x132x400mm
<b>Dispatch Weight</b>	Desk: 5.5 kg Panel: 4.5 kg	Desk: 11.4 kg Panel: 8.5 kg	6.3 kg
<b>Operating environment</b>	-10°C to 40° C (14 ° to 104 ° F), at 10 % to 85 % relative humidity, non-condensing		
<b>Power supply unit</b>	Wide-range power supply unit: 100 – 240 V AC, 50/60 Hz, with country-specific power line		
<b>Processor type</b>	N2807 / 1.83GH	-	mITX, i3-6100TE
<b>RAM memory</b>	4 GB	-	4 GB
<b>IP rating</b>	IP69k		
<b>Display</b>	10", 1280x800, TFT LED backlight	15": 1280x800, 19": 1366x768 TFT LED backlight	-
<b>Keypad</b>	touchscreen	15": membrane keypad, 38 keys with numeric keypads navigation keys, function keys and scale function keys 19": ON/OFF key, touchscreen	-
<b>Operating system</b>	Windows 10 IoT Enterprise includes device lockdown features e.g. mass storage blocking (USB sticks), Windows desktop protection, Windows update, Defender, etc.		
	32 bit version	-	64 bit version
<b>Supported scale types</b>	Up to 4 scales: Analog, IDNet, SICS, SICSpro max. 2 PowerDeck or 8 Powercells	-	Up to 4 scales: Analog, IDNet, SICS, SICSpro max. 2 PowerDeck or 8 Powercells
<b>Data interfaces</b>	RS232, RS422, RS485, USB, 4 I/O, Profibus	USB	RS232, RS422, RS485, USB, 4 I/O
<b>Protocols</b>	ASCII input, Continuous template, CTPZ, Demand output, Keyboard input, SICS, MMR, Toledo continuous, Toledo short Continuous, SAI		
<b>Units</b>	g, kg, lb, oz, ozt, dwt, t, custom unit		
<b>More information:</b>	▶ <a href="http://www.mt.com/IND930">www.mt.com/IND930</a> / <a href="http://www.mt.com/IND970">www.mt.com/IND970</a>		

## Dimensions

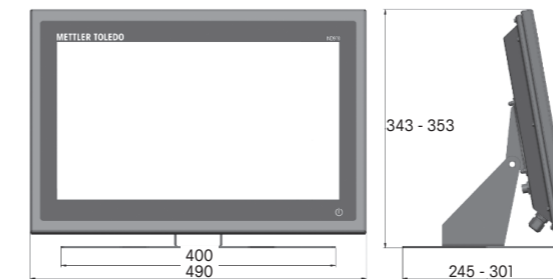
### IND930 – desk version



### IND930 – panel version



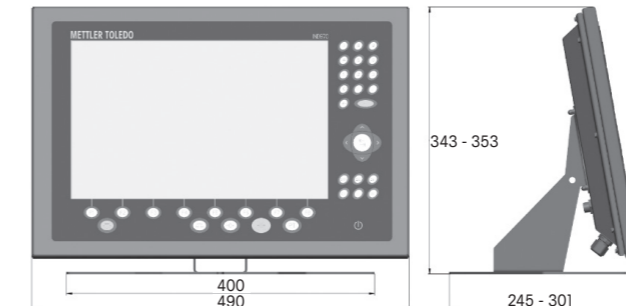
### IND970-19" – desk version



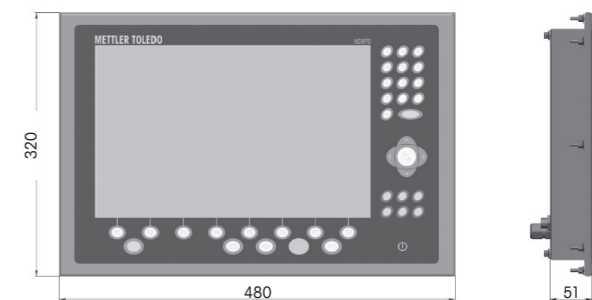
### IND970-19" – panel version



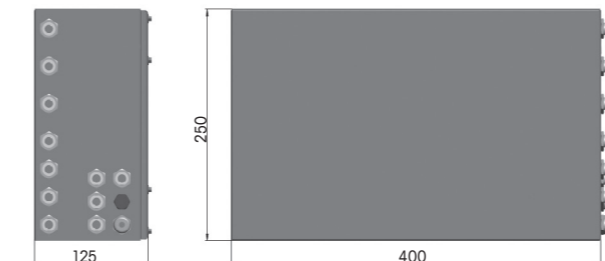
### IND970-15" – desk version



### IND970-15" – panel version



### IND970 Elobox



# Discover the Latest Industry Knowledge



## Services for Uptime, Performance, Compliance and Expertise

Visit our Expertise Library to download and view a variety of resources, including:

- Guides
- Videos
- Webinars
- And More!

► [www.mt.com/library](http://www.mt.com/library)

[www.mt.com](http://www.mt.com)

For more information

### METTLER TOLEDO Group

Industrial Division

Local contact: [www.mt.com/contacts](http://www.mt.com/contacts)

Subject to technical changes

©04/2021 METTLER TOLEDO. All rights reserved

Document No. 30454355 B

MarCom Industrial

